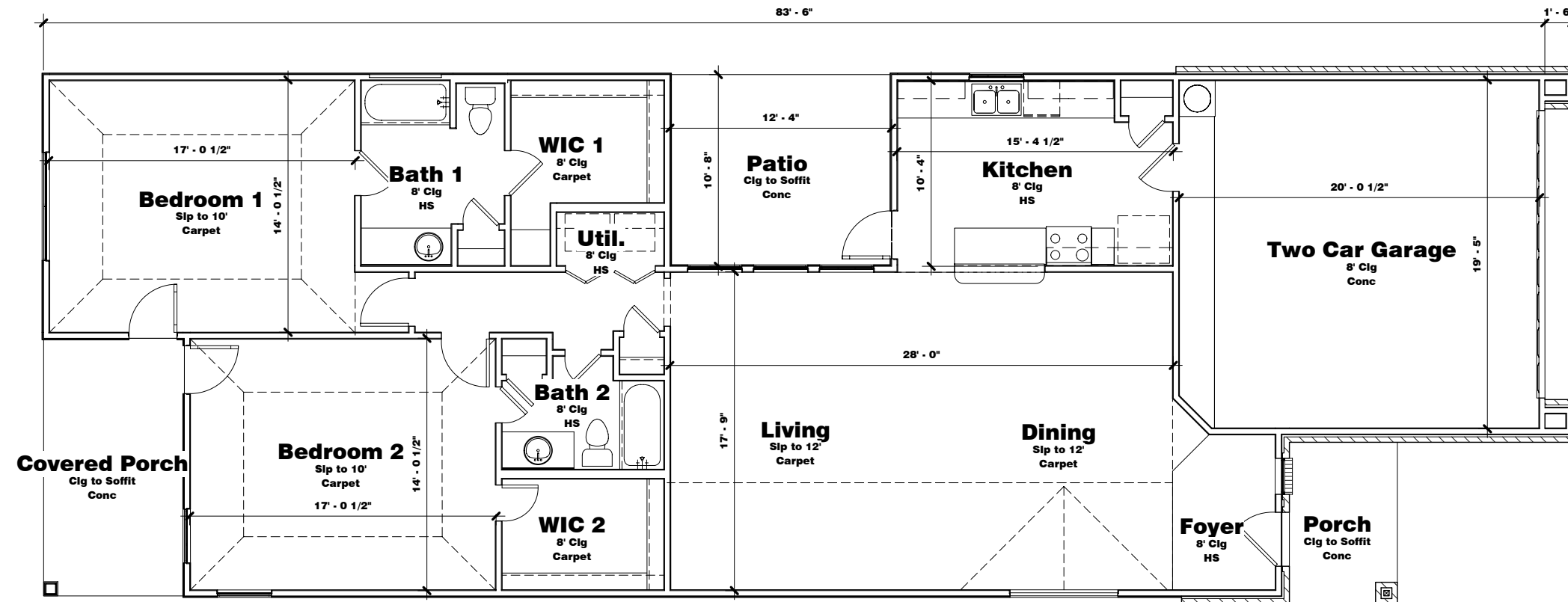


**General Notes:**

1. Refer to partial floor plans on elevation sheets for front architectural features, window locations and window sizes. See floor plan sheet for elevation A information.
2. All angled walls and cabinets are 45° U.N.O.
3. Provide 5/8" Type "X" gypsum board throughout garage.
4. Door connecting garage and house to be 1 3/8" thick solid core, 20 minute fire rated with self closer, gasketed and sealed per local codes.
5. Provide 5/8" Type "X" gypsum board at all usable areas beneath stairs.
6. Provide 24" square platform, 18" high in garage for water heater.
7. Square butt inside brick corners. (Do not lace corners)
8. Laundry Room shelf to be 60" A.F.F.
9. Master Closet back shelf to be 72" A.F.F. Master Closet side shelves to be 67" A.F.F.
10. Secondary Bedroom shelves to be 67" A.F.F.
11. Cathedral ceiling beam to be furred out to 6" wide.
12. Carstop curbs to 36" wide with 1 1/2" drop sloping to 3".
13. All porch and patio ceilings to be 3/8" rough sawn plywood.
14. Interior doors to be six panel interior passage doors.



REVISIONS


**Plan 1649**

AN RBA, INC. COMPANY  
**LIFESTYLE USA DESIGN**  
 INNOVATIVE LEADERS IN QUALITY & AFFORDABLE RESIDENTIAL DESIGN  
 1084 W. Gray, Suite 200, Wichita, Kansas 67219  
 Office (713) 524-2821 Fax (713) 524-5325  
 E-mail: lusa@lusa.net

Floor Plan

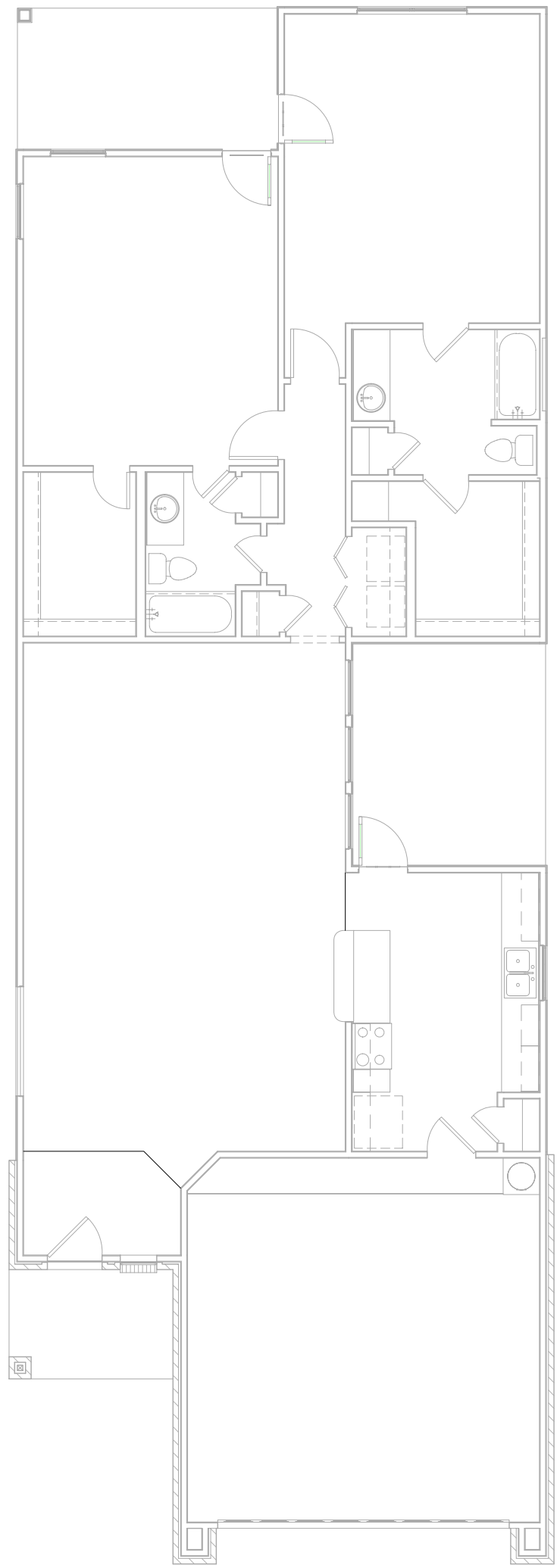
SHEET NO.

**A1**

JOB NO.

DATE

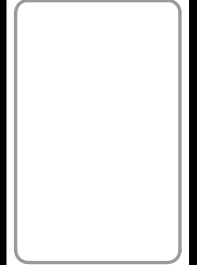
**1 Electrical Plan**  
**1/8" = 1'-0"**



Electrical Legend	
	Chimes
	Garage Door Opener
	220V Outlet
	Duplex Outlet
	Duplex Outlet - Split Wired
	Duplex Outlet - Ceiling
	Push Button
	Smoke Detector
	Switch
	3-Way Switch
	Vent
	Ceiling Mount Light
	Recessed Ceiling Light
	Wall Mount Light
	Flood Light
	Ceiling Fan

REVISIONS

**Plan 1649**

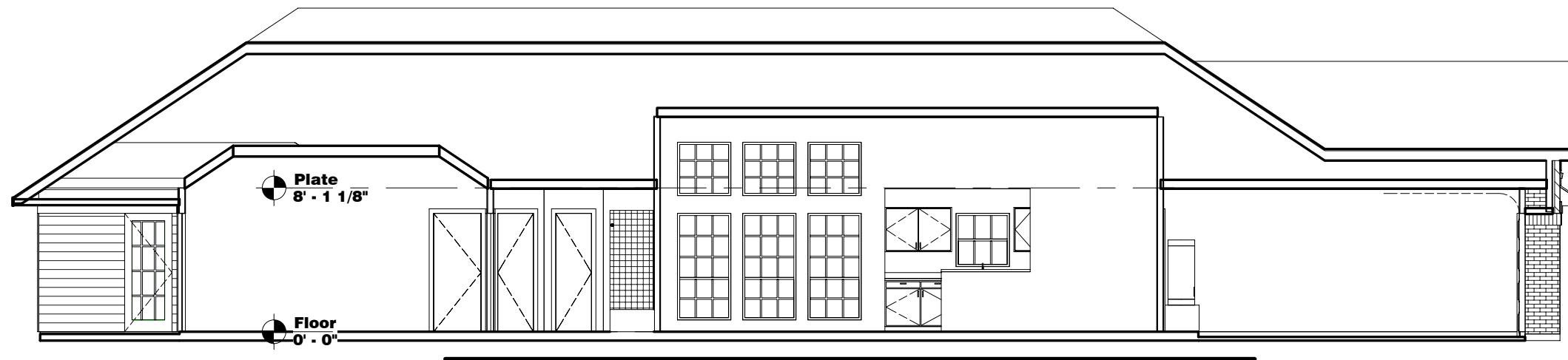


AN RBA, INC. COMPANY  
**LIFESTYLE USA DESIGN**  
 INNOVATIVE LEADERS IN QUALITY & AFFORDABLE  
 RESIDENTIAL DESIGN  
 1084 W. Gray, Suite 200, Houston, Texas 77019  
 Office (713) 524-2821 Fax (713) 524-5325  
 E-mail: [livedesign@rba.net](mailto:livedesign@rba.net)

**Electrical Plan**

**SHEET NO.**  
**A2**

**JOB NO.**  
**DATE**



**1** Section - Elevation A  
 1/8" = 1'-0"

REVISIONS


**Plan 1649**

AN RBA, INC. COMPANY  
**LIFESTYLE USA DESIGN**  
 INNOVATIVE LEADERS IN QUALITY & AFFORDABLE  
 RESIDENTIAL DESIGN  
 1084 W. Gray, Suite 200, Lincoln, Texas 77019  
 Office (713) 524-2821 Fax (713) 524-5325  
 E-mail: [lifestyleusa.net](mailto:lifestyleusa.net)

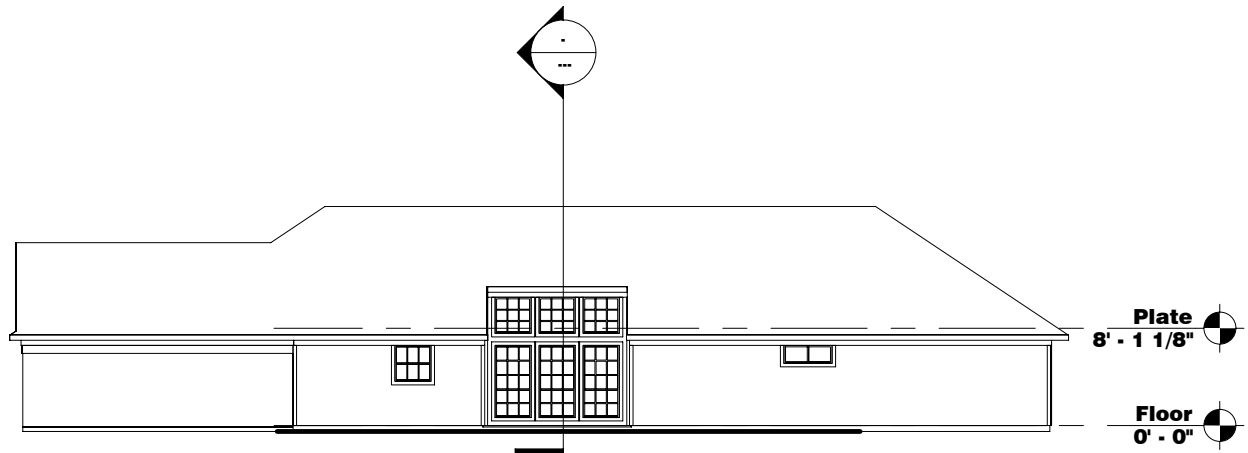
Interior  
 Elevations

SHEET NO.

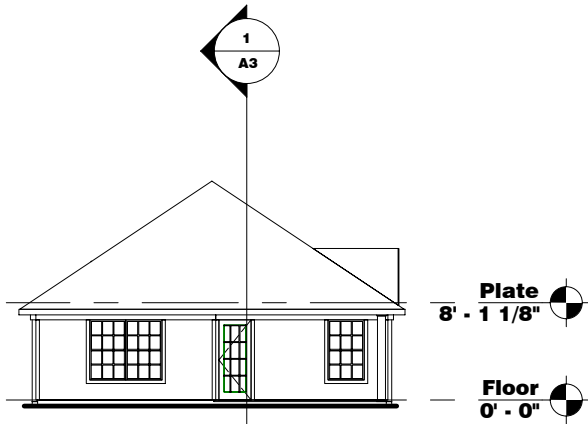
**A3**

JOB NO.

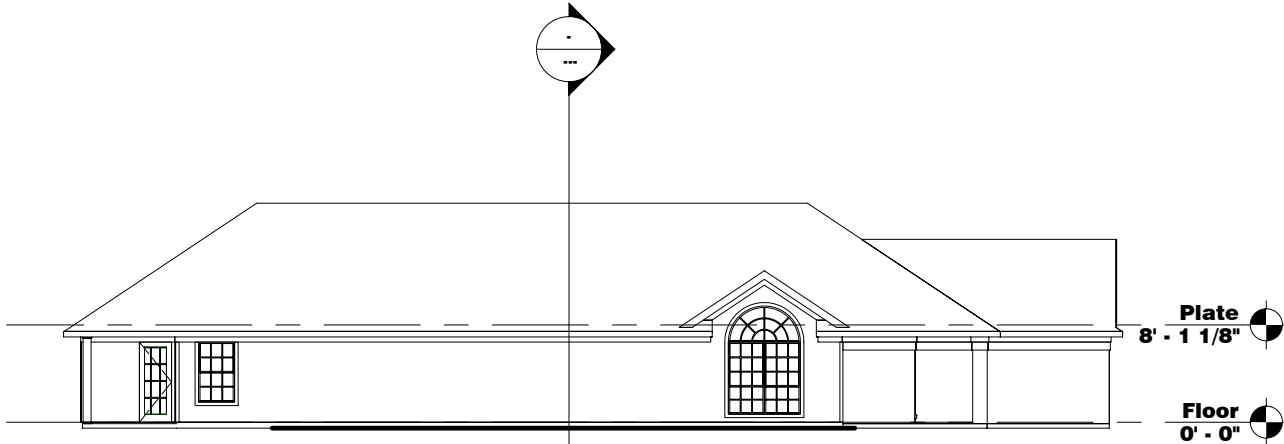
DATE



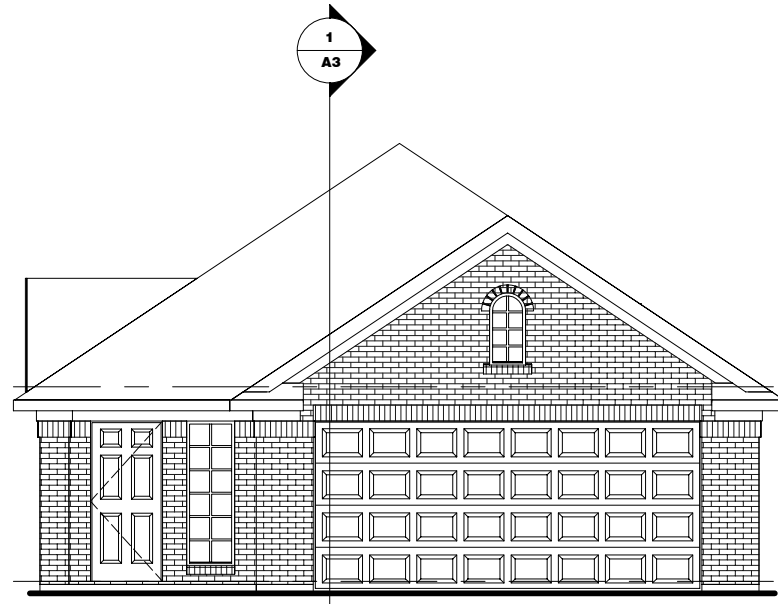
**2 Right Elevation**  
1/16" = 1'-0"



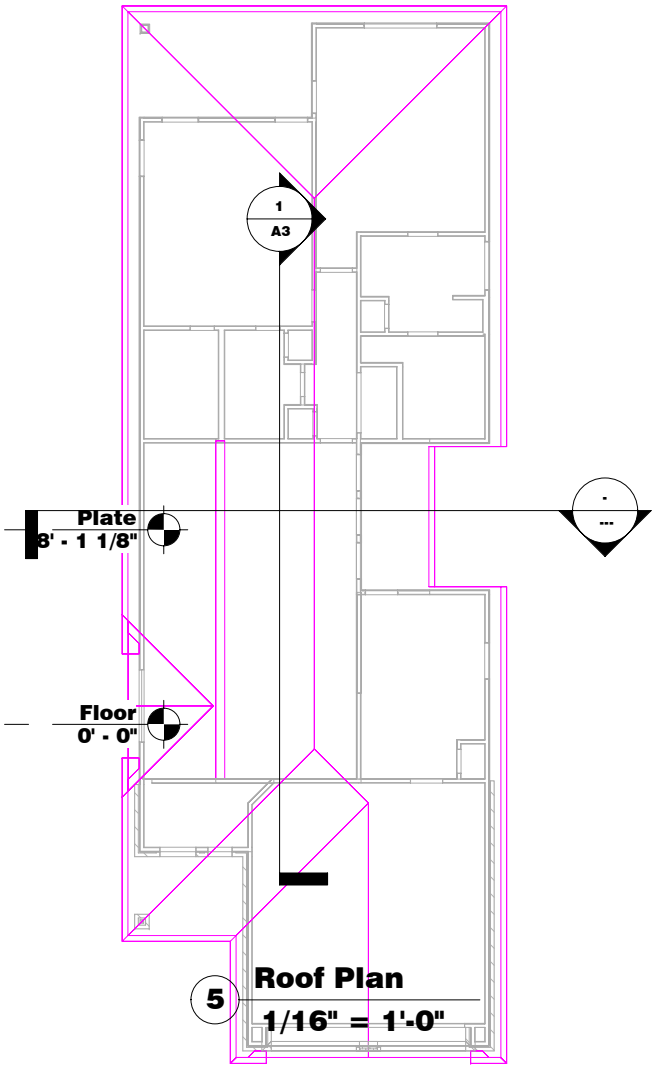
**3 Rear Elevation**  
1/16" = 1'-0"



**4 Left Elevation**  
1/16" = 1'-0"



**1 Front Elevation**  
1/8" = 1'-0"



**5 Roof Plan**  
1/16" = 1'-0"

(A) Living Area	
Level	Area
Floor	1649 SF
	1649 SF

(A) Frame Area	
Level	Area
Not Tagged	Not Tagged
Floor	Not Enclosed
	0 SF

(A) Covered Area	
Level	Area
Not Tagged	Not Tagged
Floor	Not Enclosed
	0 SF

REVISIONS

**Plan 1649**

AN RBA, INC. COMPANY  
**LIFESTYLE USA DESIGN**  
INNOVATIVE LEADERS IN QUALITY & AFFORDABLE RESIDENTIAL DESIGN  
1084 W. Hwy. 200, Suite 200, Wichita, Kansas 67219  
Office (713) 524-2821 Fax (713) 524-5325  
E-mail: [lifestyleusa@lifestyleusa.com](mailto:lifestyleusa@lifestyleusa.com)

Elevation A

SHEET NO.  
**A4a**

JOB NO.  
DATE

REVISIONS


Plan 1649

AN RBA, INC. COMPANY  
**LIFESTYLE USA DESIGN**  
 INNOVATIVE LEADERS IN QUALITY & AFFORDABLE  
 RESIDENTIAL DESIGN  
 1084 W. Hwy. 50, Suite 200, Houston, Texas 77019  
 Office (713) 524-2821 Fax (713) 524-5325  
 E-mail: [lusa@lusa.net](mailto:lusa@lusa.net)

Elevation B

SHEET NO.

**A4b**

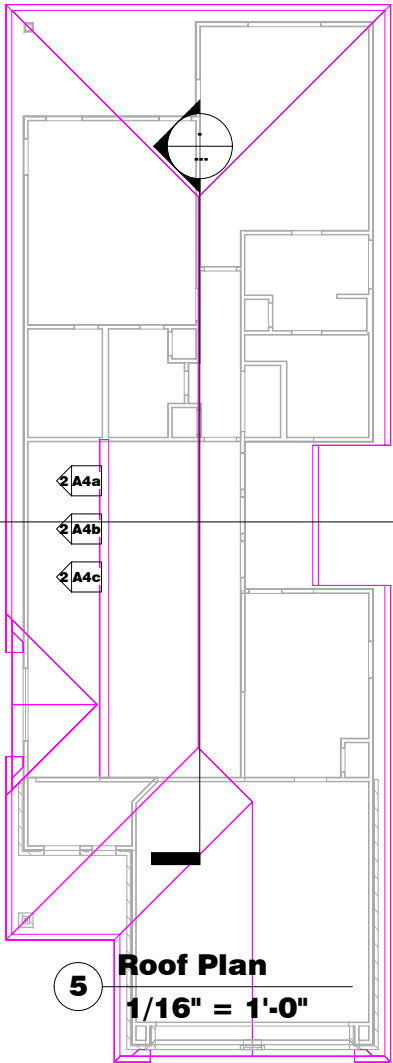
JOB NO.

DATE

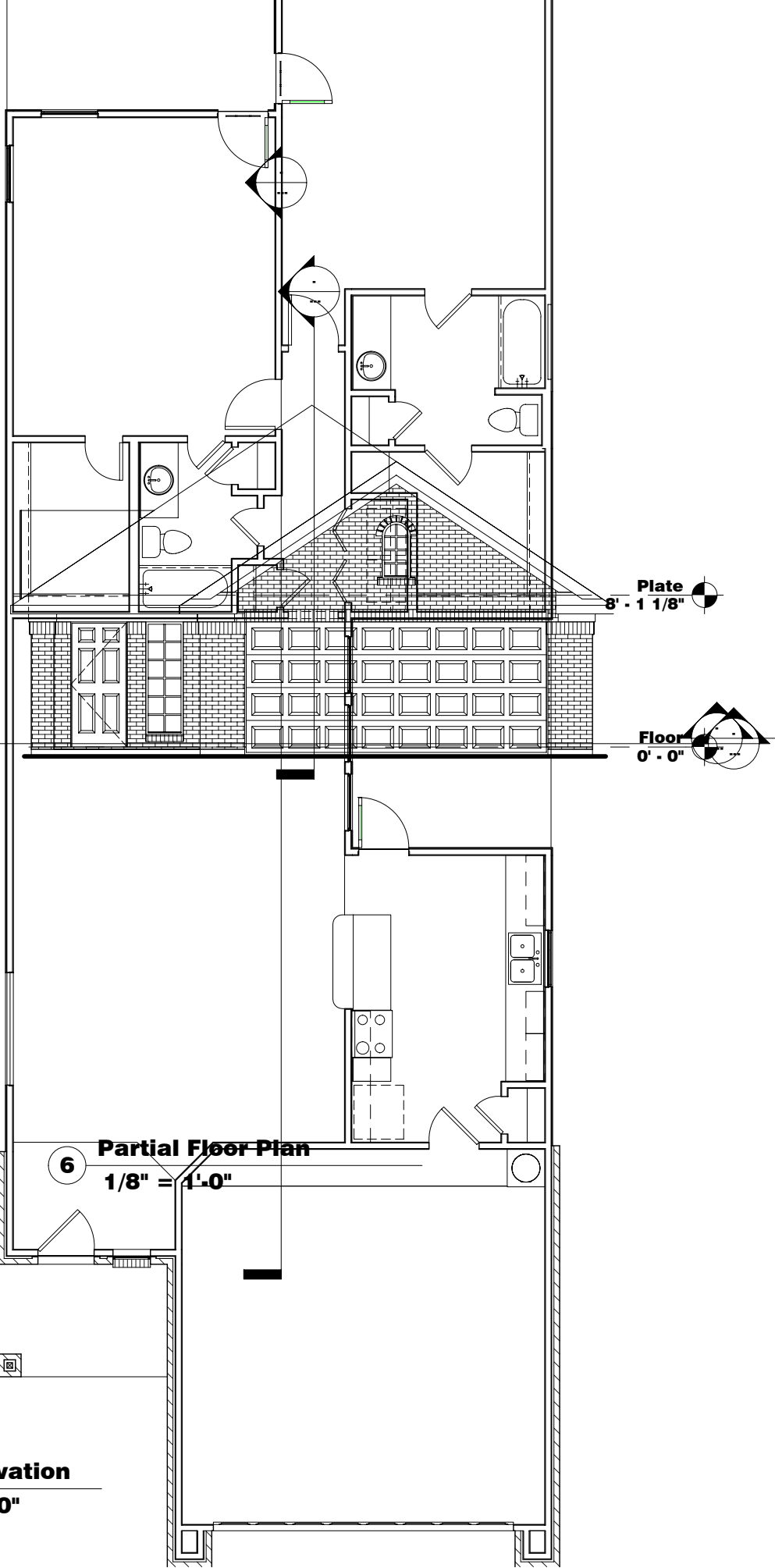
(B) Living Area	
Level	Area
Not Tagged Floor	Not Tagged Not Enclosed
0 SF	

(B) Frame Area	
Level	Area
Not Tagged Floor	Not Tagged Not Enclosed
0 SF	

(B) Covered Area	
Level	Area
Not Tagged Floor	Not Tagged Not Enclosed
0 SF	



5 Roof Plan  
 1/16" = 1'-0"



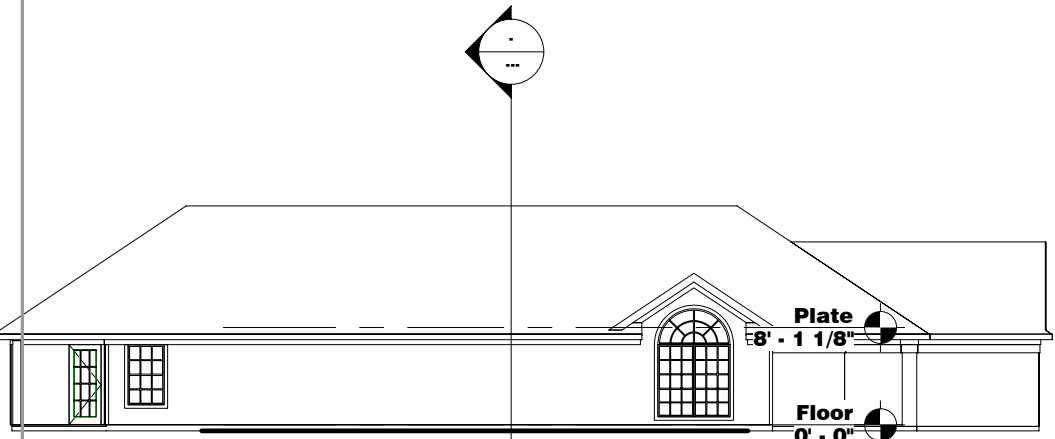
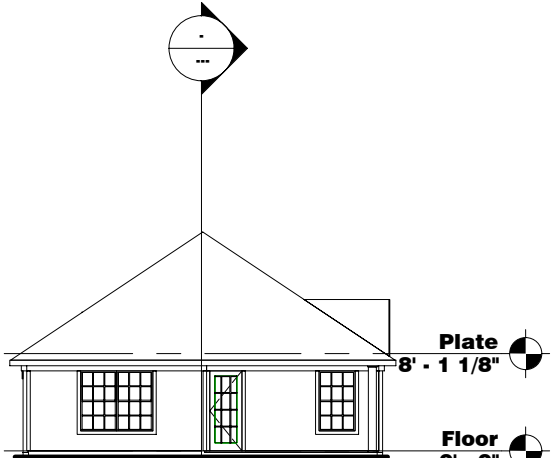
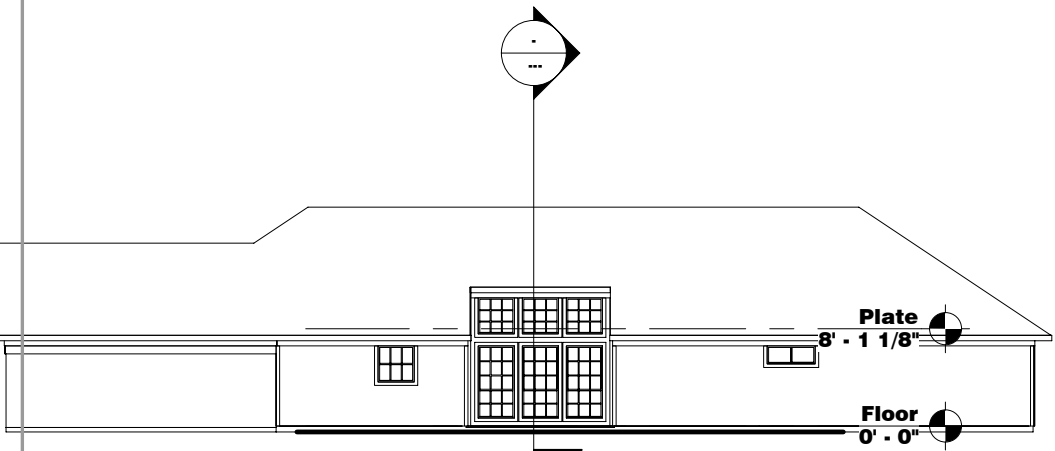
6 Partial Floor Plan  
 1/8" = 1'-0"

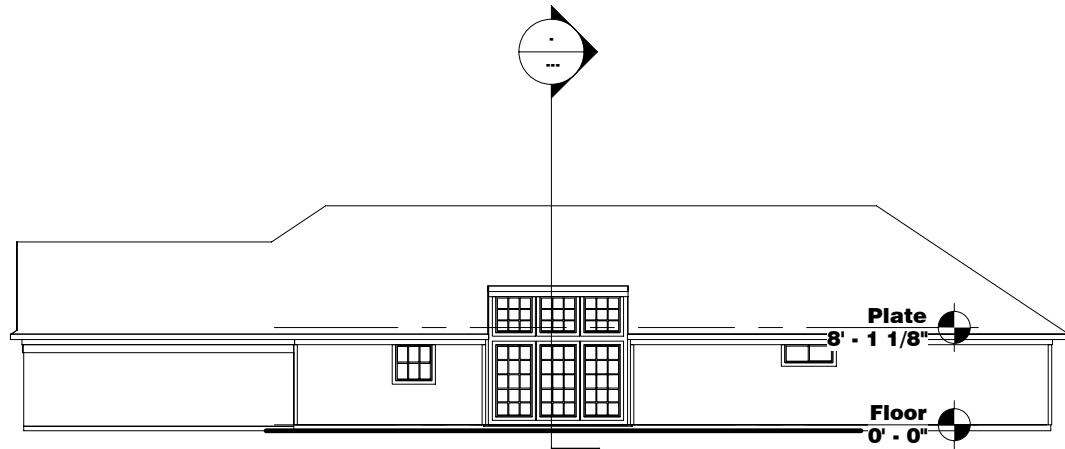
2 Right Elevation  
 1/16" = 1'-0"

3 Rear Elevation  
 1/16" = 1'-0"

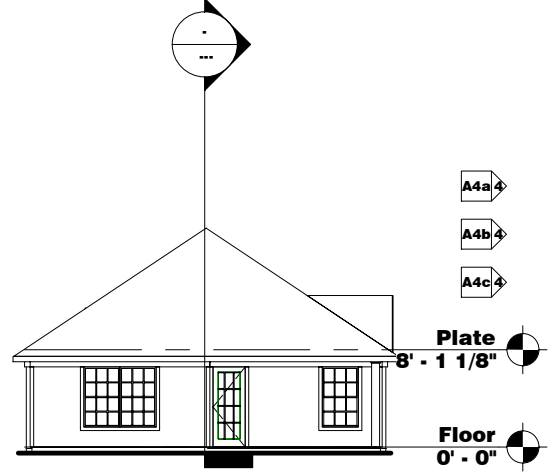
4 Left Elevation  
 1/16" = 1'-0"

1 Front Elevation  
 1/8" = 1'-0"

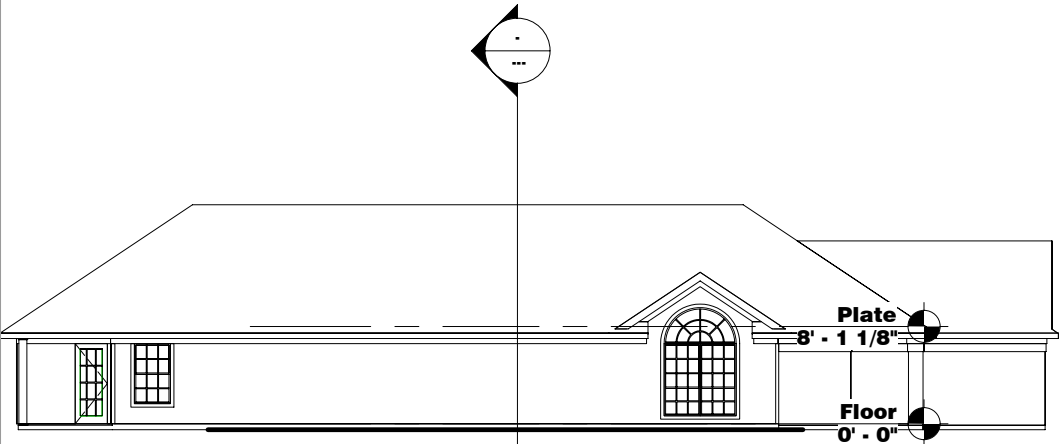




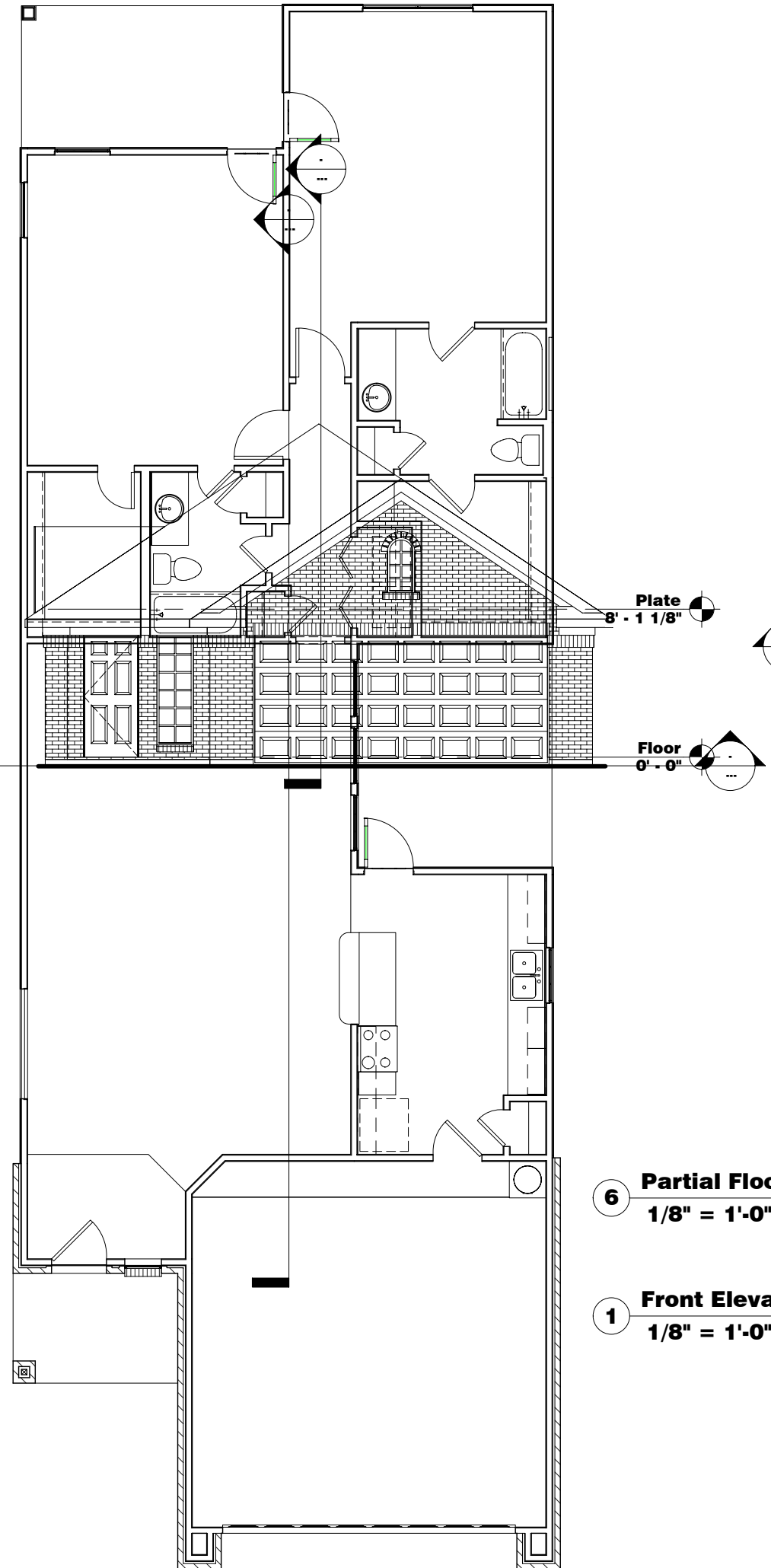
**2 Right Elevation**  
1/16" = 1'-0"



**3 Rear Elevation**  
1/16" = 1'-0"

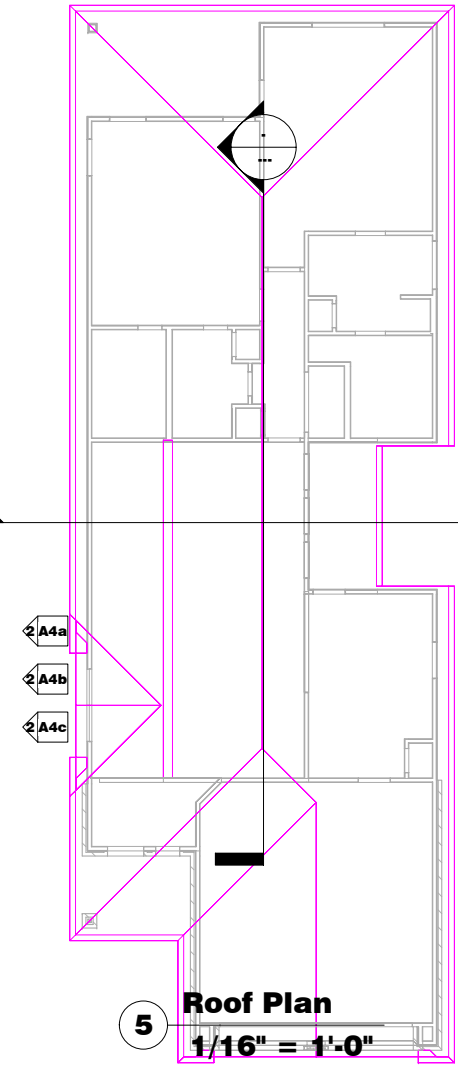


**4 Left Elevation**  
1/16" = 1'-0"



**6 Partial Floor Plan**  
1/8" = 1'-0"

**1 Front Elevation**  
1/8" = 1'-0"



**5 Roof Plan**  
1/16" = 1'-0"

(C) Living Area	
Level	Area
Not Tagged Floor	Not Tagged Not Enclosed 0 SF

(C) Frame Area	
Level	Area
Not Tagged Floor	Not Tagged Not Enclosed 0 SF

(C) Covered Area	
Level	Area
Not Tagged Floor	Not Tagged Not Enclosed 0 SF

REVISIONS

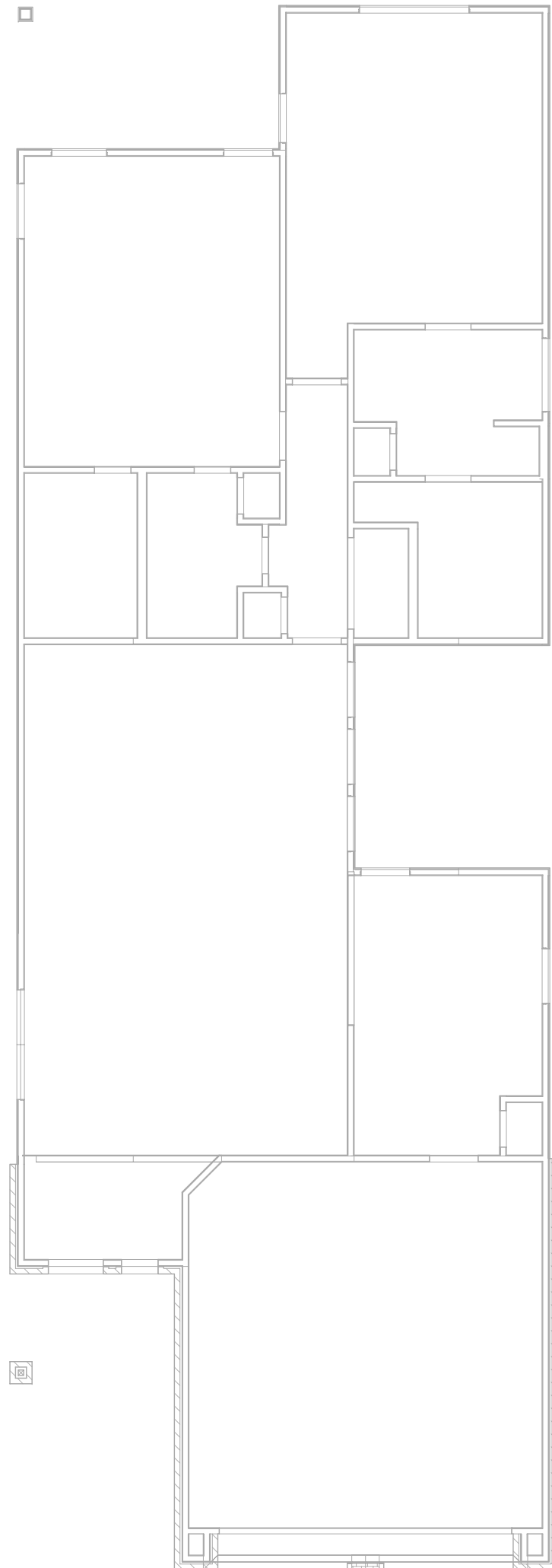
**Plan 1649**

AN RBA, INC. COMPANY  
**LIFESTYLE USA DESIGN**  
 INNOVATIVE LEADERS IN QUALITY & AFFORDABLE RESIDENTIAL DESIGN  
 1084 W. Gray, Suite 200, Houston, Texas 77019  
 Office (713) 524-2821 Fax (713) 524-5325  
 E-mail: [livedesign@rba.net](mailto:livedesign@rba.net)

Elevation C

SHEET NO.  
**A4c**

JOB NO.  
DATE



**Framing Notes:**

1. Load specification for ceiling joists- 10 psf live load, 5 psf dead load, 240 deflection for uninhabitable attic space with no storage.
2. All ceiling joists are 2x6's #3 syp at 24" o.c. U.N.O.
3. All roof rafters are 2x6's #3 syp at 24" o.c. U.N.O.
4. All beams and headers are #2 syp material U.N.O.
5. Use 2"x2"x1/8" washer on all anchor bolts in "Windzone 1" areas.

**1** Ceiling Framing Plan  
1/8" = 1'-0"

REVISIONS


**Plan 1649**

AN RPA, INC. COMPANY  
**LIFESTYLE USA DESIGN**  
 INNOVATIVE LEADERS IN QUALITY & AFFORDABLE RESIDENTIAL DESIGN  
 1084 W. Gray, Suite 200, Houston, Texas 77019  
 Office (713) 624-2821 Fax (713) 624-5325  
 E-mail: [livedesign@livedesign.net](mailto:livedesign@livedesign.net)

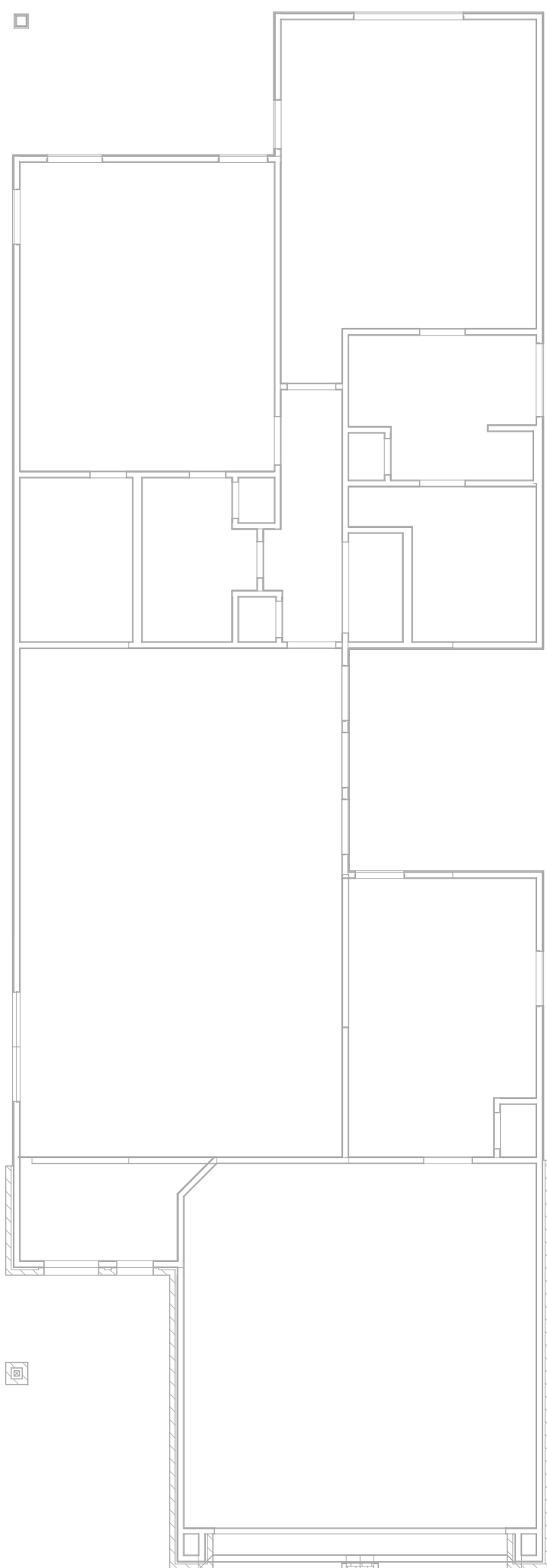
Framing Plans ·  
Elevation A

SHEET NO.

**A5a**

JOB NO.

DATE



**Framing Notes:**

1. Load specification for ceiling joists-  
10 psf live load, 5 psf dead load,  
240 deflection for uninhabitable attic  
space with no storage.
2. All ceiling joists are 2x6's #3 syp at  
24" o.c. U.N.O.
3. All roof rafters are 2x6's #3 syp at  
24" o.c. U.N.O.
4. All beams and headers are #2 syp  
material U.N.O.
5. Use 2"x2"x1/8" washer on all anchor  
bolts in "Windzone 1" areas.

**REVISIONS**


**Plan 1649**

AN RBA, INC. COMPANY  
**LIFESTYLE USA DESIGN**  
 INNOVATIVE LEADERS IN QUALITY & AFFORDABLE  
 RESIDENTIAL DESIGN  
 1084 W. Gray, Suite 200, Houston, Texas 77019  
 Office (713) 524-2821 Fax (713) 524-5325  
 E-mail: [lifestyleusa.net](mailto:lifestyleusa.net)

**1 Ceiling Framing Plan**  
 1/8" = 1'-0"

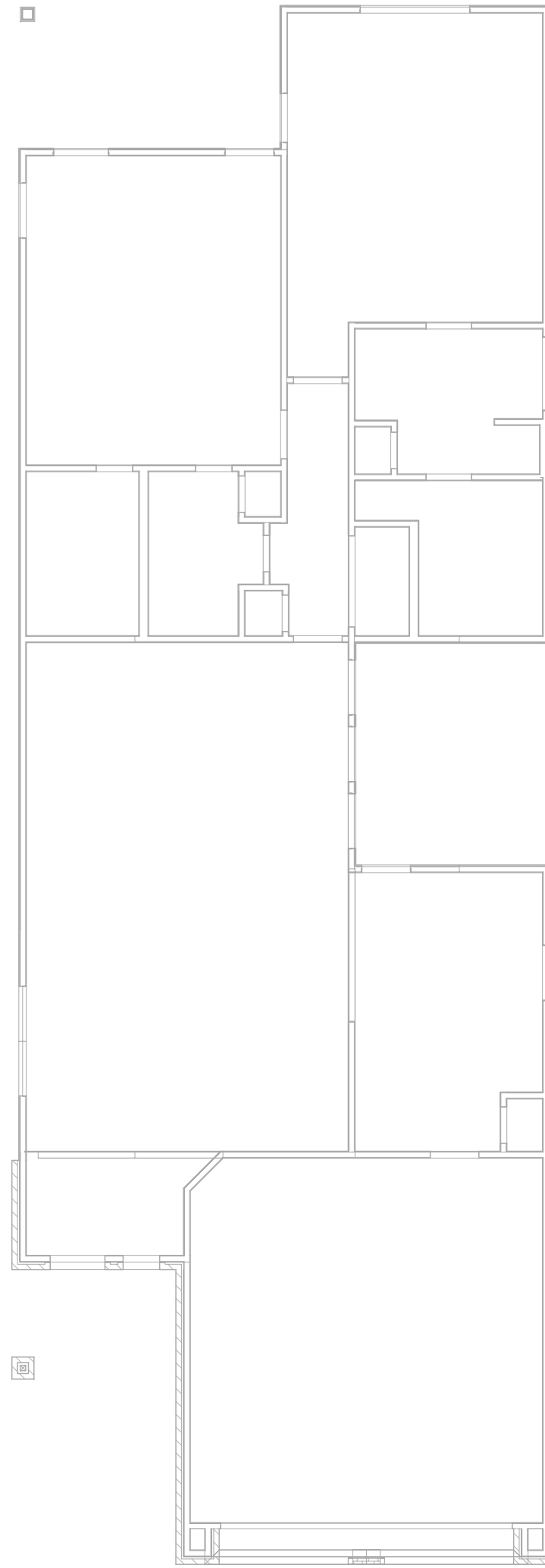
**Framing Plans ·  
 Elevation B**

**SHEET NO.**

**A5b**

**JOB NO.**

**DATE**



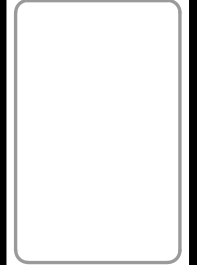
**Framing Notes:**

1. Load specification for ceiling joists-  
10 psf live load, 5 psf dead load,  
240 deflection for uninhabitable attic  
space with no storage.
2. All ceiling joists are 2x6's #3 syp at  
24" o.c. U.N.O.
3. All roof rafters are 2x6's #3 syp at  
24" o.c. U.N.O.
4. All beams and headers are #2 syp  
material U.N.O.
5. Use 2"x2"x1/8" washer on all anchor  
bolts in "Windzone 1" areas.

**1 Ceiling Framing Plan**  
**1/8" = 1'-0"**

REVISIONS

**Plan 1649**



AN RBA, INC. COMPANY  
**LIFESTYLE USA DESIGN**  
 INNOVATIVE LEADERS IN QUALITY & AFFORDABLE  
 RESIDENTIAL DESIGN  
 1084 W. Gray, Suite 200, Houston, Texas 77019  
 Office (713) 524-2827 Fax (713) 524-5325  
 E-mail: [livedesign@lba.net](mailto:livedesign@lba.net)

**Framing Plans ·  
Elevation C**

**SHEET NO.  
A5c**

**JOB NO.  
DATE**